

CERTIFICATE OF LOCATION OF GOVERNMENT CORNER

County of Anoka

State of Minnesota

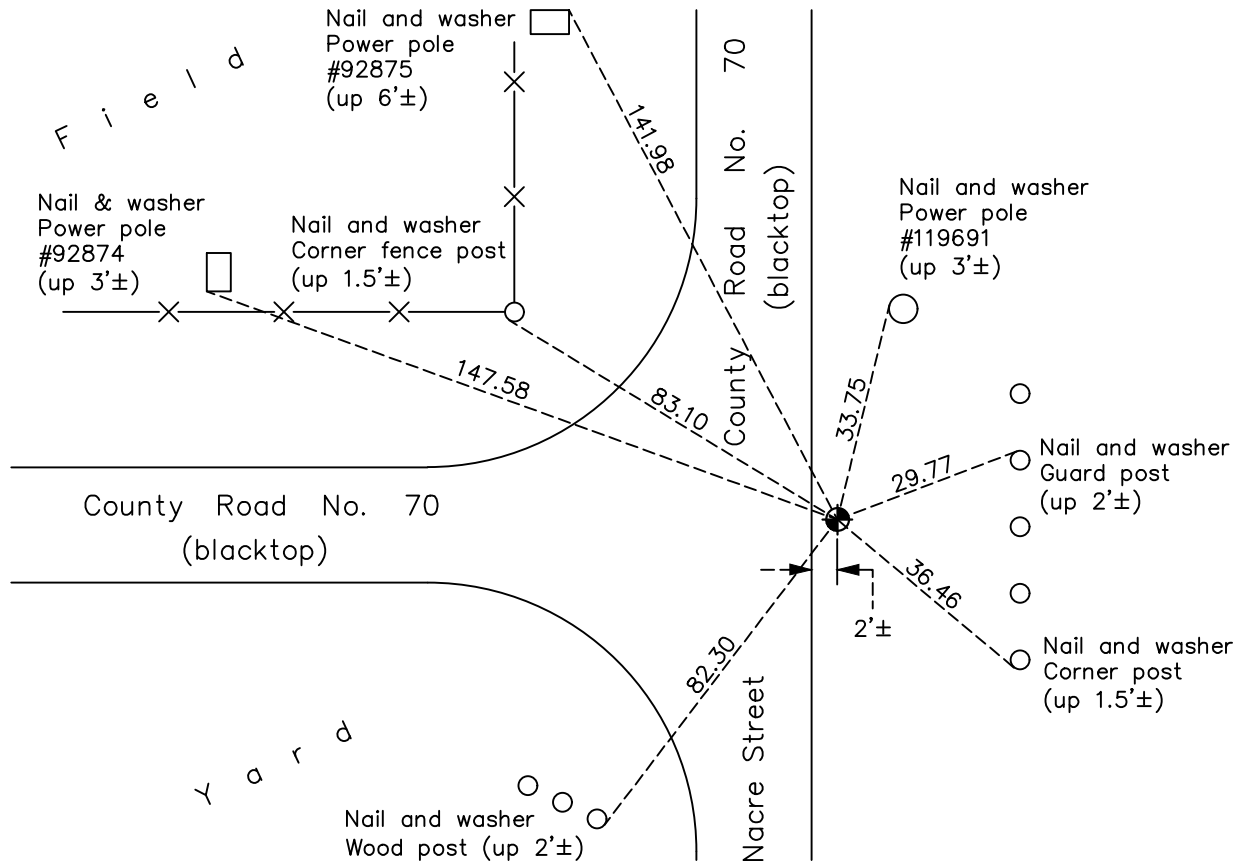
Southeast Corner of Sec. 28 Township 34 Range 25

On the 29th day of July, 1969, the described corner was evidenced by a temporary spike set March 28, 1969 found using an area resurvey

and to perpetuate the location of said corner, at the exact location thereof, a permanent marker was placed consisting of a cast iron monument

AND on the 3rd day of November, 2022, said permanent marker was found down 0.7'± and the ties were updated

Updated reference ties are as shown below.



Revision Date
2/01/2023

N.A.D. 1983 Coordinates
(1996 Adjustment)

County Project Coordinates	
Northing	<u>232845.8941</u>
Easting	<u>452915.8393</u>
Date	<u>4/29/03</u>

I hereby certify that this United States public land survey monument record is correct and complete to the best of my knowledge and belief.
David Zieglmeier Date 3/1/23
David Zieglmeier Anoka County Surveyor
Minnesota License Number 46179

HISTORY OF GOVERNMENT CORNER

Page No. 71

County of Anoka

State of Minnesota

Southeast Corner of Sec. 28 Township 34 Range 25

CORNER HISTORY:

October 14, 1968 - Set cast iron monument down $0.1'\pm$ using area resurvey. Established ties to monument.

February 28, 1969 - Removed corner and reset 10.72' west along section line.

March 28, 1969 - Set temporary spike using area resurvey. Established ties to spike.

July 29, 1969 - Temporary spike not found. Set cast iron monument flush using corner ties. Updated ties.

June 5, 1974 - Found cast iron monument and updated ties.

May 9, 1977 - Found cast iron monument and updated ties.

May 27, 1981 - Found cast iron monument and updated ties.

July 24, 1984 - Found cast iron monument and updated ties.

June 12, 1987 - Found cast iron monument and updated ties.

July 20, 1992 - Found cast iron monument and updated ties.

July 16, 1997 - Found cast iron monument and updated ties.

April 29, 2003 - Established NAD 1983 (1996 adj.) Anoka County project coordinates by static GPS methods.

April 29, 2007 - Found cast iron monument and updated ties.

March 28, 2014 - Found cast iron monument down $0.6'\pm$. Verified position by VRS GPS methods. Updated ties.

June 8, 2018 - Found cast iron monument flush and updated ties.

August 14, 2018 - Set construction ties and removed cast iron monument prior to road construction.

September 5, 2018 - Set cast iron monument down $0.7'\pm$ after road construction using construction ties. Verified location of corner by Static GPS methods. Updated ties.

September 11, 2020 - Found cast iron monument down $0.6'\pm$. Verified position by VRS GPS methods. Updated ties.

November 3, 2022 - Found cast iron monument down $0.7'\pm$, verified position by VRS GPS method, updated ties