

# CERTIFICATE OF LOCATION OF GOVERNMENT CORNER

County of Anoka

State of Minnesota

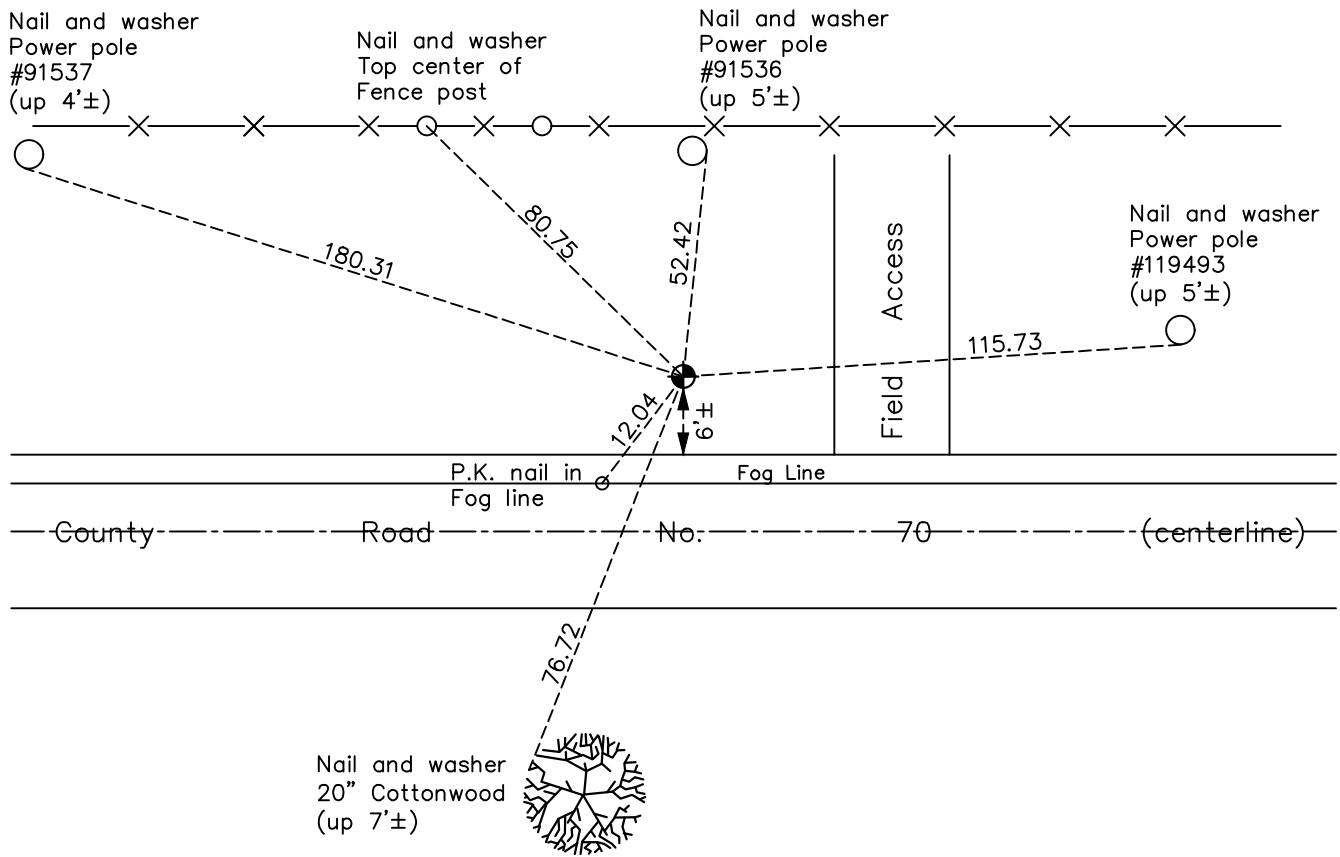
## Southwest Corner of Sec. 28 Township 34 Range 25

On the 23rd day of July, 1968, the described corner was evidenced by area resurvey

and to perpetuate the location of said corner, at the exact location thereof, a permanent marker was placed consisting of a cast iron monument

AND on the 9th day of November, 2022, said permanent marker was found down 0.4'± and the ties were updated

Updated reference ties are as shown below.



Revision Date  
2/01/2023

N.A.D. 1983 Coordinates  
 (1996 Adjustment)

County Project Coordinates	
Northing	<u>232912.3862</u>
Easting	<u>447669.2477</u>
Date	<u>4/29/03</u>

I hereby certify that this United States public land survey monument record is correct and complete to the best of my knowledge and belief.

David Zieglmeier Date 3/1/23

David Zieglmeier Anoka County Surveyor  
 Minnesota License Number 46179

# HISTORY OF GOVERNMENT CORNER

Page No. 73

County of Anoka

State of Minnesota

## Southwest Corner of Sec. 28 Township 34 Range 25

### **CORNER HISTORY:**

July 23, 1968 - Set cast iron monument down 0.3'± using area resurvey. Established ties to monument.

July 1, 1970 - Found cast iron monument down 0.1'± and updated ties.

June 5, 1974 - Found cast iron monument and updated ties.

May 10, 1977 - Found cast iron monument and updated ties.

July 24, 1984 - Found cast iron monument and updated ties.

May 27, 1981 - Found cast iron monument and updated ties.

June 17, 1987 - Found cast iron monument and updated ties.

July 20, 1992 - Found cast iron monument and updated ties.

July 16, 1997 - Found cast iron monument and updated ties.

April 29, 2003 - Established NAD 1983 (1996 adj.) Anoka County project coordinates by static GPS methods.

March 31, 2014 - Found cast iron monument. Verified position by VRS GPS methods. Updated ties.

September 11, 2020 - Found cast iron monument down 0.3'±. Verified position by VRS GPS methods. Updated ties.

November 9, 2022 - Found cast iron monument down 0.4'±, verified position by VRS GPS method, updated ties