

CERTIFICATE OF LOCATION OF GOVERNMENT CORNER

County of Anoka

State of Minnesota

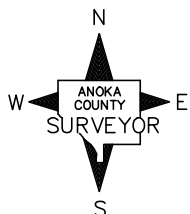
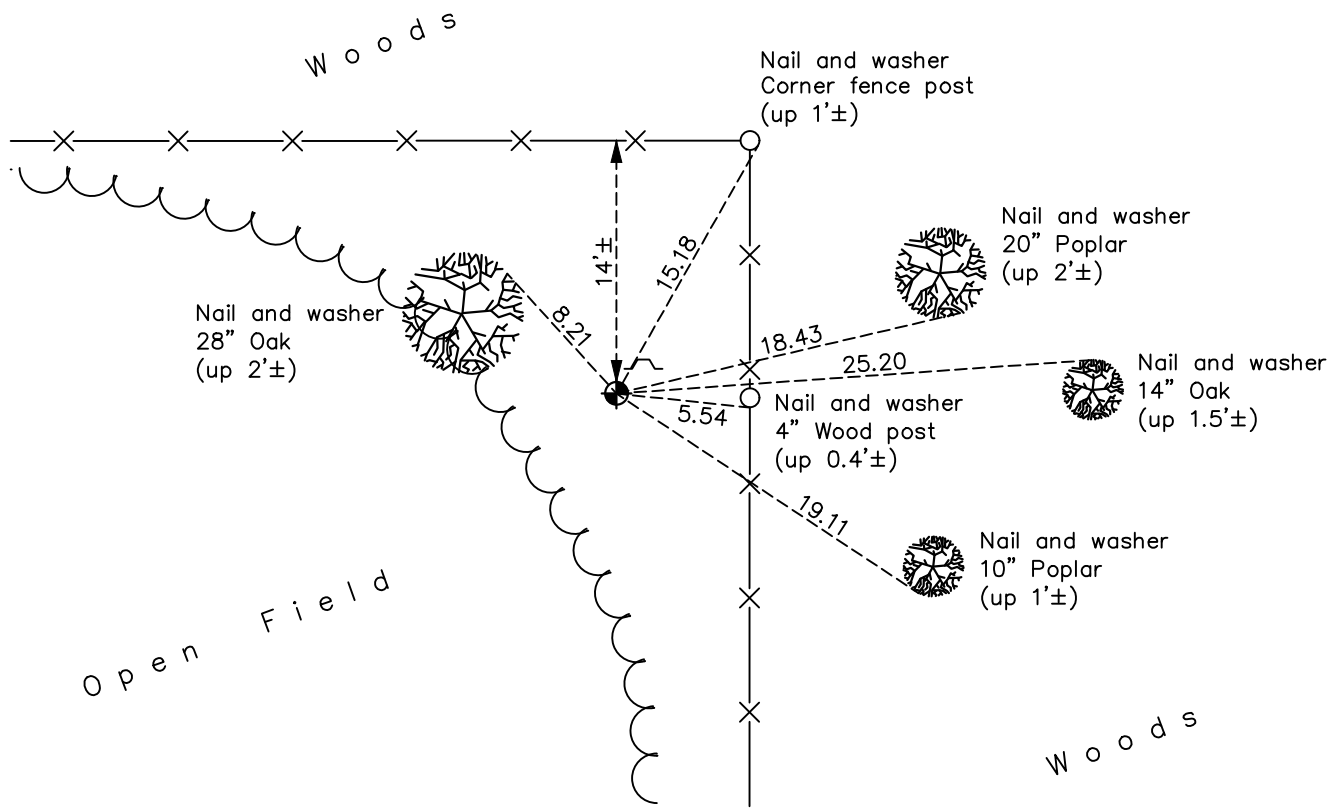
South 1/4 Corner of Sec. 29 Township 34 Range 25

On the 23rd day of July, 1968, the described corner was evidenced by area resurvey

and to perpetuate the location of said corner, at the exact location thereof, a permanent marker was placed consisting of a cast iron monument w/sign and post on the northeast side

AND on the 5th day of November, 2020, said permanent marker was found up 0.2'± and the ties were updated

Updated reference ties are as shown below.



Revision Date

11/16/2020

N.A.D. 1983 Coordinates
(1996 Adjustment)

County Project Coordinates	
Northing	<u>232960.6030</u>
Easting	<u>445025.5443</u>
Date	<u>5/28/03</u>

I hereby certify that this United States public land survey monument record is correct and complete to the best of my knowledge and belief.

David M Zieglmeier Date 7/26/21

David Zieglmeier Anoka County Surveyor
Minnesota License Number 46179

HISTORY OF GOVERNMENT CORNER

Page No. 74

County of Anoka

State of Minnesota

South 1/4 Corner of Sec. 29 Township 34 Range 25

CORNER HISTORY:

July 23, 1968 - Set cast iron monument flush using area resurvey. Established ties to monument.

June 13, 1974 - Found cast iron monument and updated ties.

June 3, 1981 - Found cast iron monument and updated ties.

July 29, 1984 - Found cast iron monument and updated ties.

June 18, 1987 - Found cast iron monument and updated ties.

May 28, 2003 - Established NAD 1983 (1996 adj.) Anoka County project coordinates by static GPS methods.

April 9, 2014 - Found cast iron monument up 0.2'± w/sign and post on northeast side. Updated ties.

November 5, 2020 - Found cast iron monument up 0.2'± and updated ties.