

CERTIFICATE OF LOCATION OF GOVERNMENT CORNER

County of Anoka

State of Minnesota

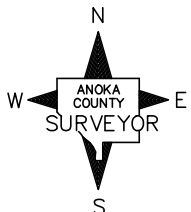
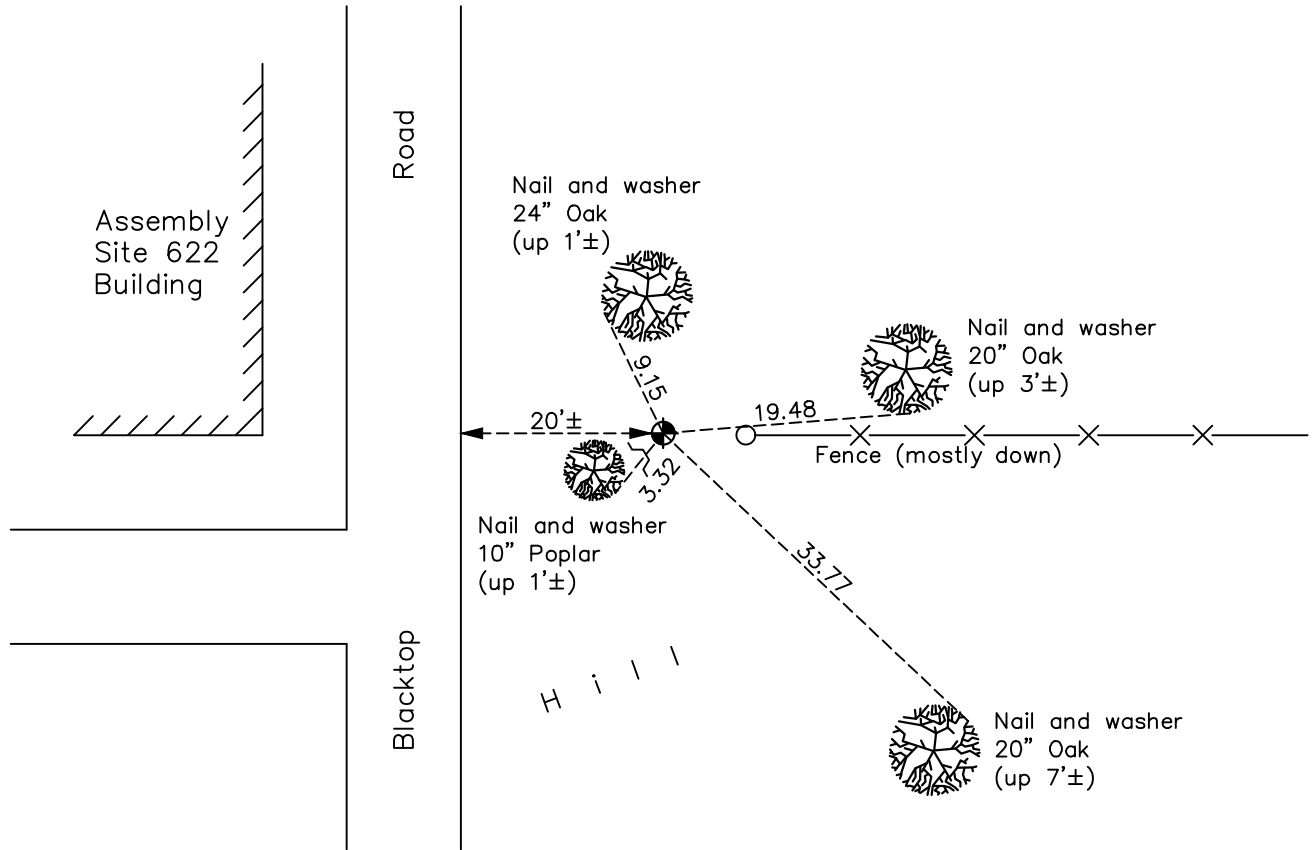
Northeast Corner of Sec. 31 Township 34 Range 25

On the 14th day of January, 1964, the described corner was evidenced by a 1" iron pipe from old ties

and to perpetuate the location of said corner, at the exact location thereof, a permanent marker was placed consisting of a cast iron monument with sign and post on the west side

AND on the 5th day of November, 2020, said permanent marker was found flush and the ties were updated

Updated reference ties are as shown below.



Revision Date

11/16/2020

N.A.D. 1983 Coordinates
(1996 Adjustment)

County Project Coordinates	
Northing	<u>233008.0536</u>
Easting	<u>442381.6596</u>
Date	<u>5/28/03</u>

I hereby certify that this United States public land survey monument record is correct and complete to the best of my knowledge and belief.

David M Zieglmeier Date 7/26/21

David Zieglmeier Anoka County Surveyor
Minnesota License Number 46179

HISTORY OF GOVERNMENT CORNER

Page No. 75

County of Anoka

State of Minnesota

Northeast Corner of Sec. 31 Township 34 Range 25

CORNER HISTORY:

January 14, 1964 - Found 1" iron pipe up 0.3'± using Harvey A. Cartwright ties. Updated ties.

September 7, 1965 - Replaced 1" iron pipe with a cast iron monument flush and updated ties.

June 1, 1981 - Found cast iron monument and updated ties.

July 25, 1984 - Found cast iron monument and updated ties.

June 18, 1987 - Found cast iron monument and updated ties.

February 3, 1994 - Found cast iron monument and updated ties.

May 28, 2003 - Established NAD 1983 (1996 adj.) Anoka County project coordinates by static GPS methods.

April 9, 2014 - Found cast iron monument flush w/sign and post on the west side. Updated ties.

November 5, 2020 - Found cast iron monument flush. Verified position by VRS GPS methods. Updated ties.