

CERTIFICATE OF LOCATION OF GOVERNMENT CORNER

County of Anoka

State of Minnesota

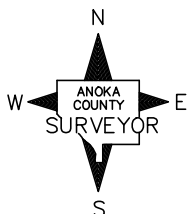
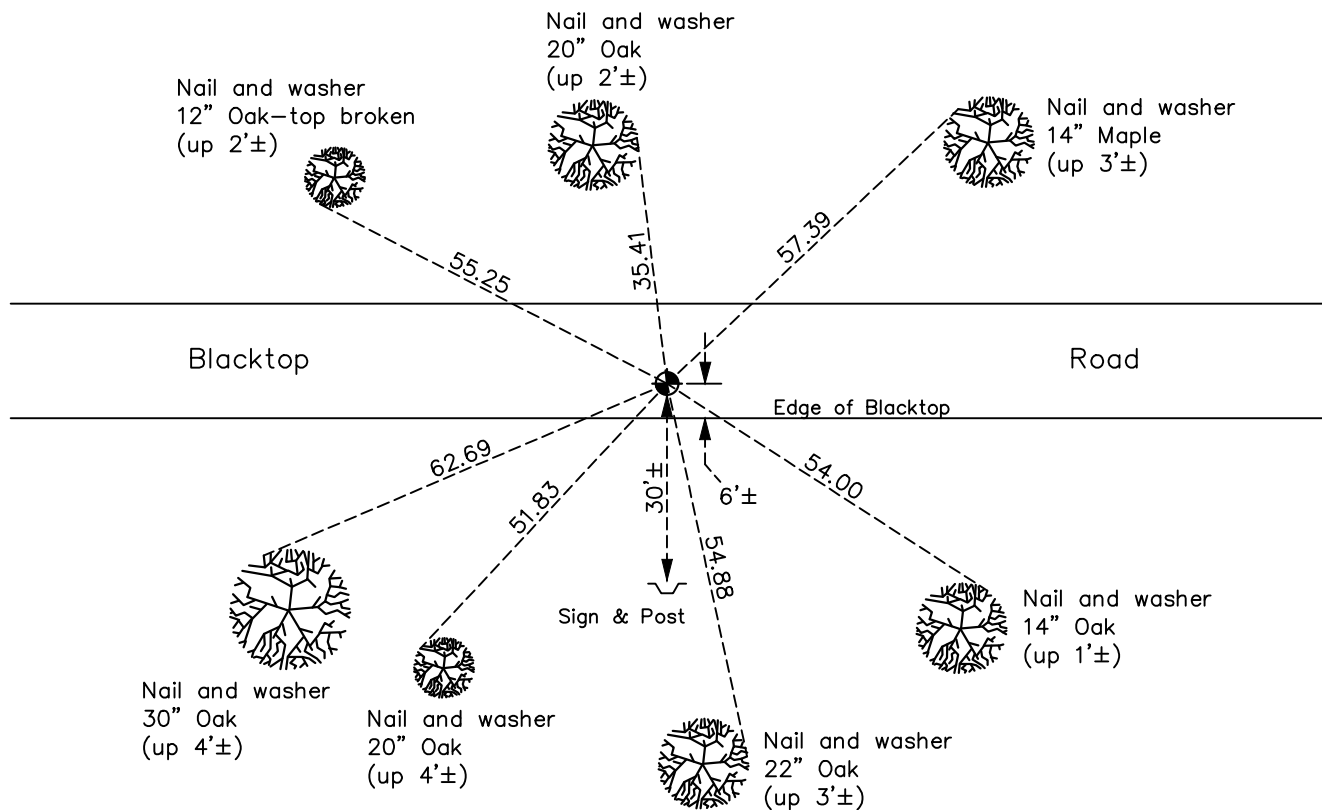
North 1/4 Corner of Sec. 31 Township 34 Range 25

On the 15th day of January, 1964, the described corner was evidenced by Cartwright ties

and to perpetuate the location of said corner, at the exact location thereof, a permanent marker was placed consisting of a cast iron monument with sign and post 30'± south of monument

AND on the 5th day of November, 2020, said permanent marker was found flush and the ties were updated

Updated reference ties are as shown below.



Revision Date

11/16/2020

N.A.D. 1983 Coordinates
(1996 Adjustment)

County Project Coordinates

Northing 233076.3357

Easting 439810.9852

Date 4/03/06

I hereby certify that this United States public land survey monument record is correct and complete to the best of my knowledge and belief.

David M Zieglmeier Date 7/26/21

David Zieglmeier Anoka County Surveyor

Minnesota License Number 46179

HISTORY OF GOVERNMENT CORNER

Page No. 76

County of Anoka

State of Minnesota

North 1/4 Corner of Sec. 31 Township 34 Range 25

CORNER HISTORY:

January 15, 1964 - Set railroad spike using Harvey Cartwright ties. Updated ties.

September 7, 1965 - Replaced railroad spike with a cast iron monument down 0.8'±. Updated ties.

June 1, 1981 - Found cast iron monument and updated ties.

July 24, 1984 - Found cast iron monument and updated ties.

June 18, 1987 - Found cast iron monument and updated ties.

April 3, 2006 - Found cast iron monument and updated ties. Established NAD 1983 (1996 adj.) Anoka County project coordinates by static GPS methods.

April 9, 2014 - Found cast iron monument flush. Verified position by VRS GPS methods. Updated ties.

November 5, 2020 - Found cast iron monument flush. Verified position by VRS GPS methods. Updated ties.