

CERTIFICATE OF LOCATION OF GOVERNMENT CORNER

County of Anoka

State of Minnesota

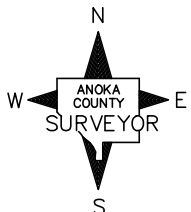
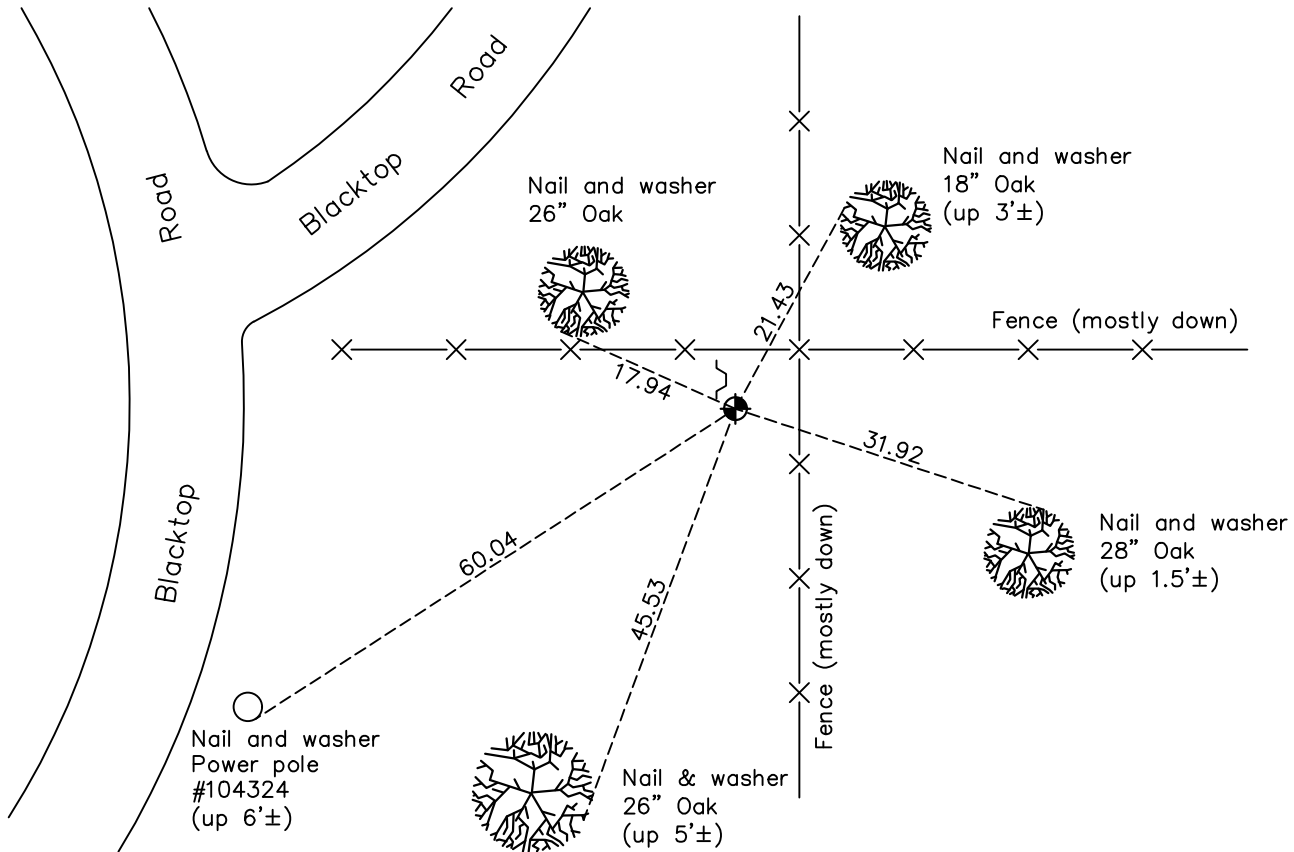
East 1/4 Corner of Sec. 31 Township 34 Range 25

On the 8th day of January, 1964, the described corner was evidenced by a 1" iron pipe

and to perpetuate the location of said corner, at the exact location thereof, a permanent marker was placed consisting of a cast iron monument with sign and post on the north side facing west

AND on the 5th day of November, 2020, said permanent marker was found up 0.1'± and the ties were updated

Updated reference ties are as shown below.



Revision Date

11/16/2020

N.A.D. 1983 Coordinates
(1996 Adjustment)

County Project Coordinates	
Northing	<u>230388.1791</u>
Easting	<u>442346.7738</u>
Date	<u>5/14/03</u>

I hereby certify that this United States public land survey monument record is correct and complete to the best of my knowledge and belief.

David M Zieglmeier Date 7/26/21

David Zieglmeier Anoka County Surveyor
Minnesota License Number 46179

HISTORY OF GOVERNMENT CORNER

Page No. 79

County of Anoka

State of Minnesota

East 1/4 Corner of Sec. 31 Township 34 Range 25

CORNER HISTORY:

January 8, 1964 - Found 1" iron pipe up 0.5'± near fence corner and updated ties.

September 7, 1965 - Replaced 1" iron pipe with a cast iron monument up 0.1'± and updated ties.

July 17, 1970 - Found cast iron monument w/sign marked "Property Marker S2E2" on the northeast side.
Updated ties.

June 1, 1981 - Found cast iron monument and updated ties.

July 25, 1984 - Found cast iron monument and updated ties.

June 18, 1987 - Found cast iron monument and updated ties.

May 14, 2003 - Established NAD 1983 (1996 adj.) Anoka County project coordinates by static GPS methods.

April 9, 2014 - Found cast iron monument up 0.1'± w/sign and post on the north side facing west. Updated ties.

November 5, 2020 - Found cast iron monument up 0.1'±. Verified position by VRS GPS methods. Updated ties.