

MISSISSIPPI WEST REGIONAL PARK

Sheet 7

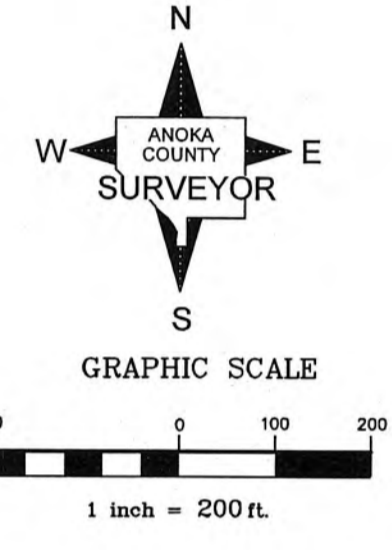
Sheet 6

Sheet 5

Sheet 4

Sheet 3

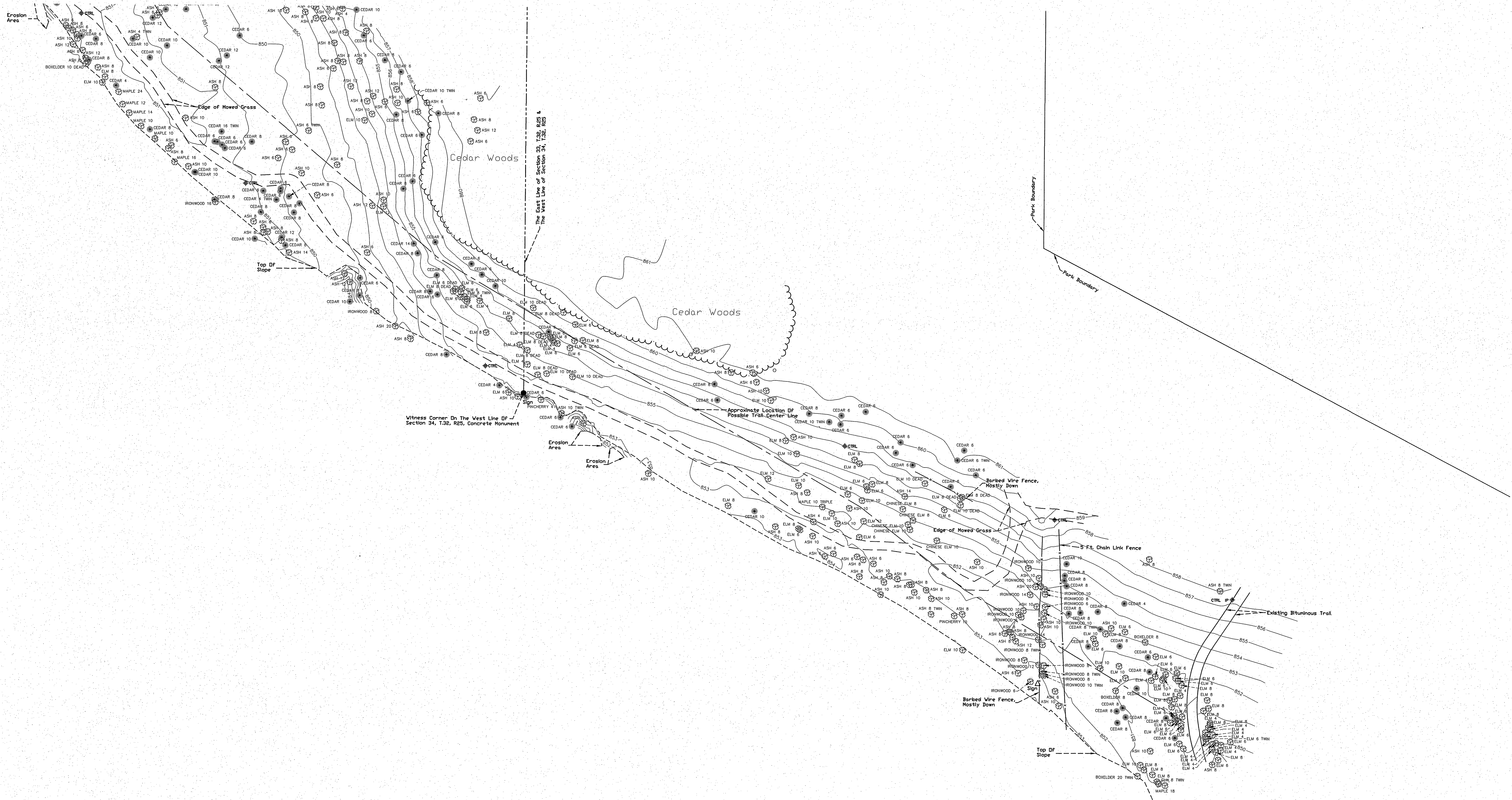
Sheet 2



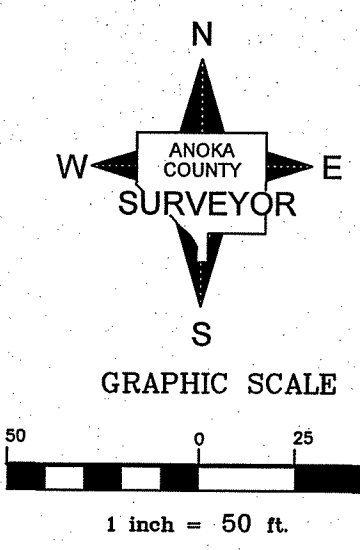
I hereby certify that this survey, plan or report was prepared by me or under my direct supervision and that I am a duly Licensed Land Surveyor under the laws of the State of Minnesota.

Larry D. Houm
LARRY D. HOUM
Date JAN. 28, 2016 License No. 18165

ANOKA COUNTY SURVEYOR'S OFFICE	
2100 3RD AVENUE NORTH, ROOM 224 ANOKA, MN. 55303 763-323-5511	
TOPOGRAPHY SURVEY for ANOKA COUNTY PARKS DEPARTMENT	
DATE: JANUARY 29, 2016	SHEET 1 OF 7 SHEETS



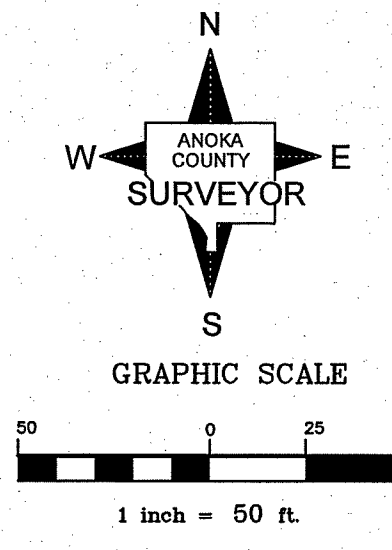
The East Line of Section 33, T.32, R.25
 The West Line of Section 34, T.32, R.25



ANOKA COUNTY SURVEYOR'S OFFICE
 2100 3RD AVENUE NORTH, ROOM 224
 ANOKA, MN. 55303 763-323-5511

TOPOGRAPHY SURVEY
 for
ANOKA COUNTY PARKS DEPARTMENT

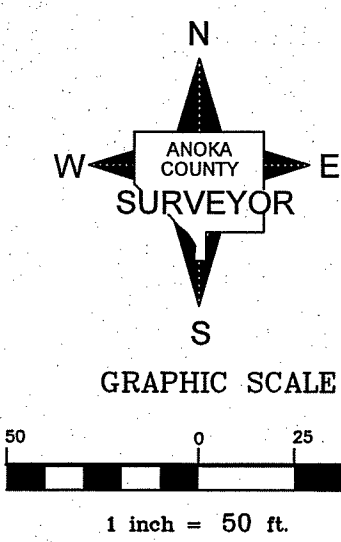
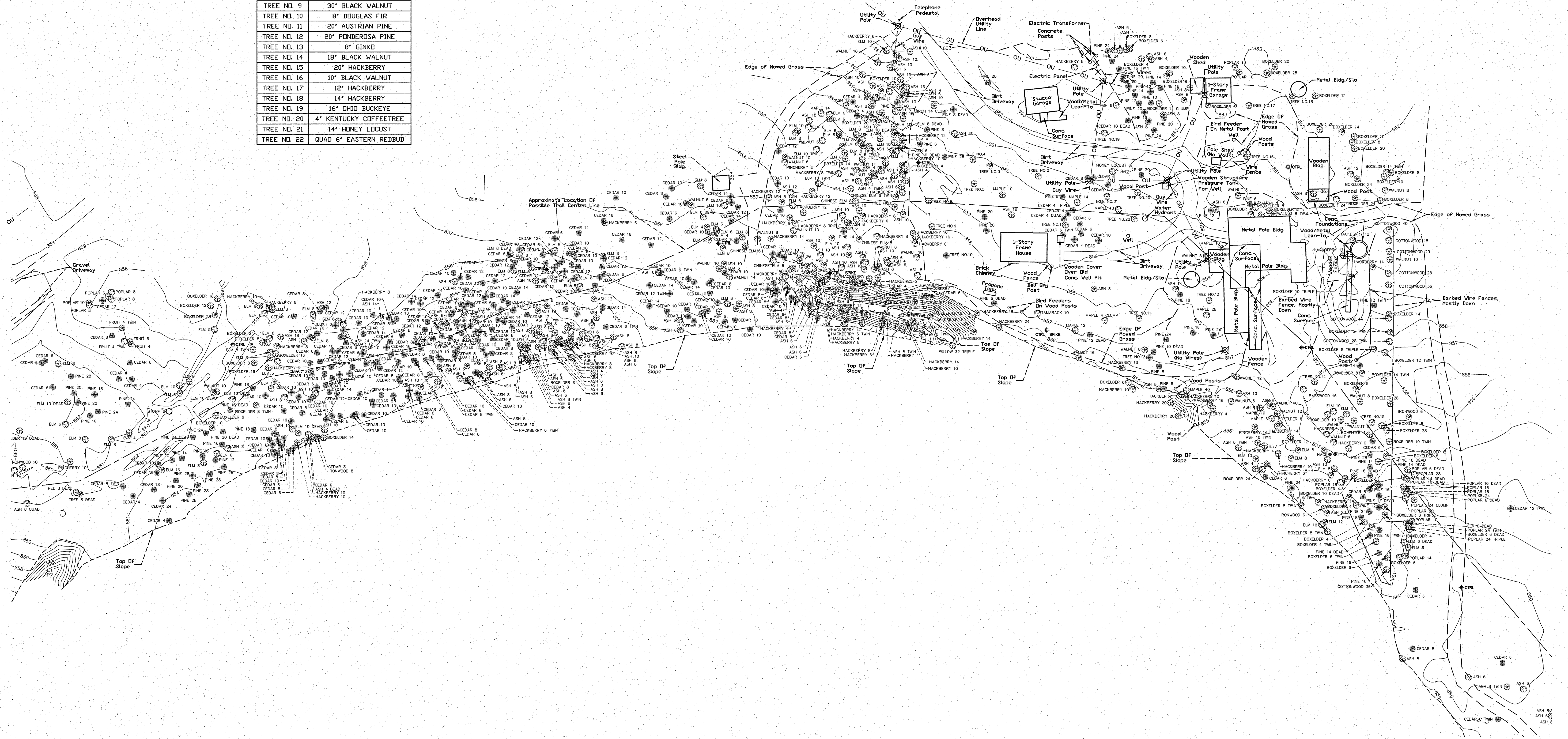
DATE: JANUARY 29, 2016 SHEET 2 OF 7 SHEETS

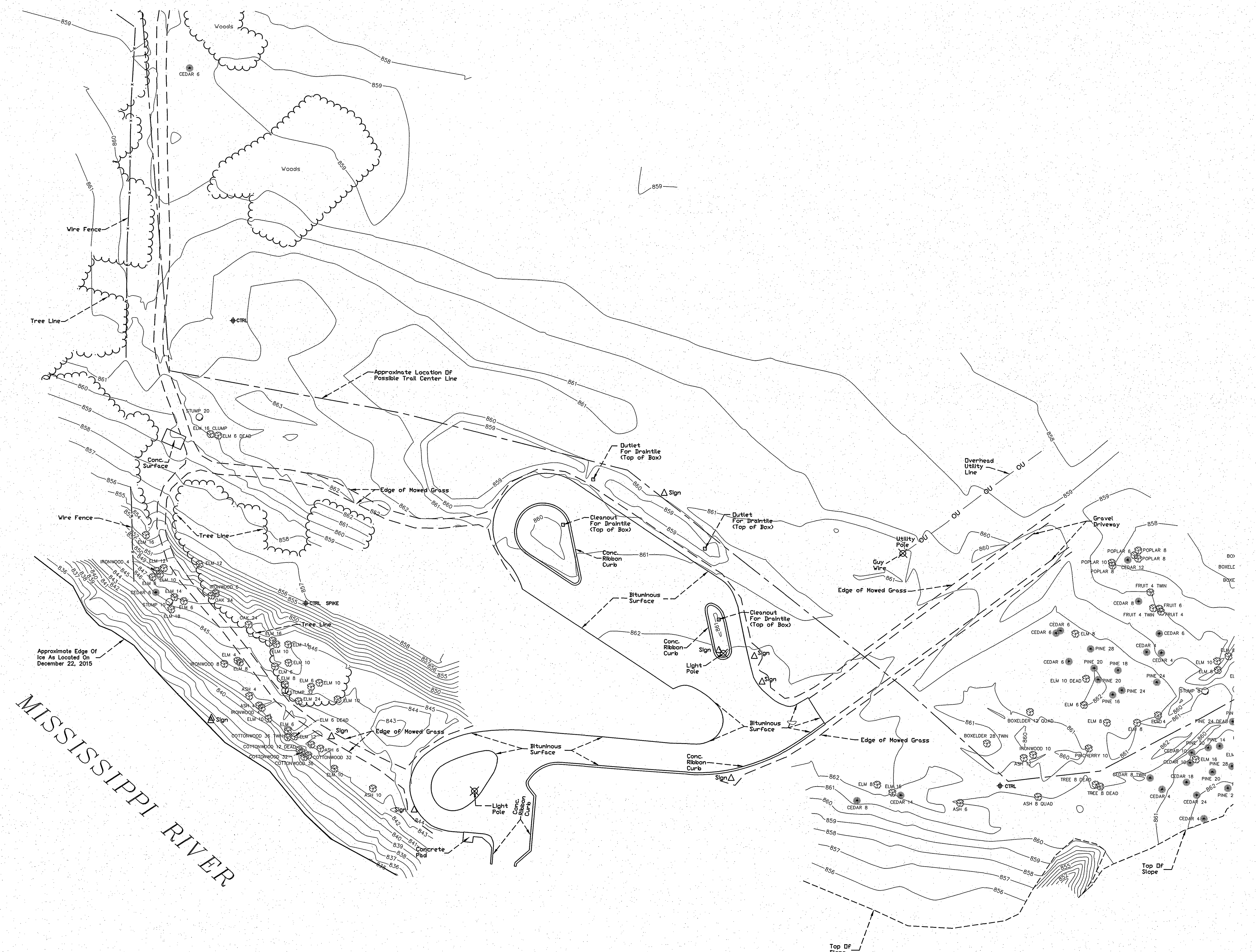


ANOKA COUNTY SURVEYOR'S OFFICE
 2100 3RD AVENUE NORTH, ROOM 224
 ANOKA, MN. 55303 763-323-5511
TOPOGRAPHY SURVEY
 for
ANOKA COUNTY PARKS DEPARTMENT
 DATE: JANUARY 29, 2016 SHEET 3 OF 7 SHEETS

Mon 27, 1:56 P.M. 2016
 4
 11:52 AM

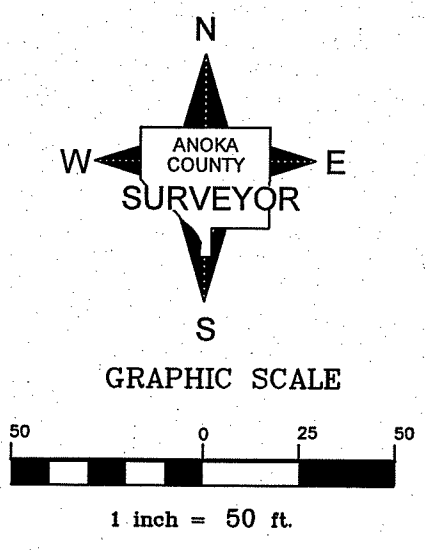
TREE NO. 1	6' EASTERN HEMLOCK
TREE NO. 2	18' BALSAM FIR
TREE NO. 3	5' KENTUCKY COFFEETREE
TREE NO. 4	5' KENTUCKY COFFEETREE
TREE NO. 5	14' KENTUCKY COFFEETREE
TREE NO. 6	16' HONEY LOCUST
TREE NO. 7	16' NORTHERN CATALPA
TREE NO. 8	16' HACKBERRY
TREE NO. 9	30' BLACK WALNUT
TREE NO. 10	8' DOUGLAS FIR
TREE NO. 11	20' AUSTRIAN PINE
TREE NO. 12	20' PONDEROSA PINE
TREE NO. 13	8' GINKGO
TREE NO. 14	18' BLACK WALNUT
TREE NO. 15	20' HACKBERRY
TREE NO. 16	10' BLACK WALNUT
TREE NO. 17	12' HACKBERRY
TREE NO. 18	14' HACKBERRY
TREE NO. 19	16' OHIO BUCKEYE
TREE NO. 20	4' KENTUCKY COFFEETREE
TREE NO. 21	14' HONEY LOCUST
TREE NO. 22	QUAD 6' EASTERN REDBUD





MISSISSIPPI RIVER

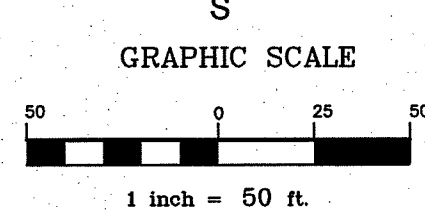
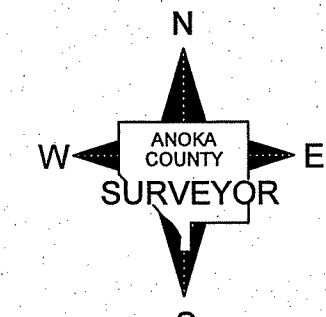
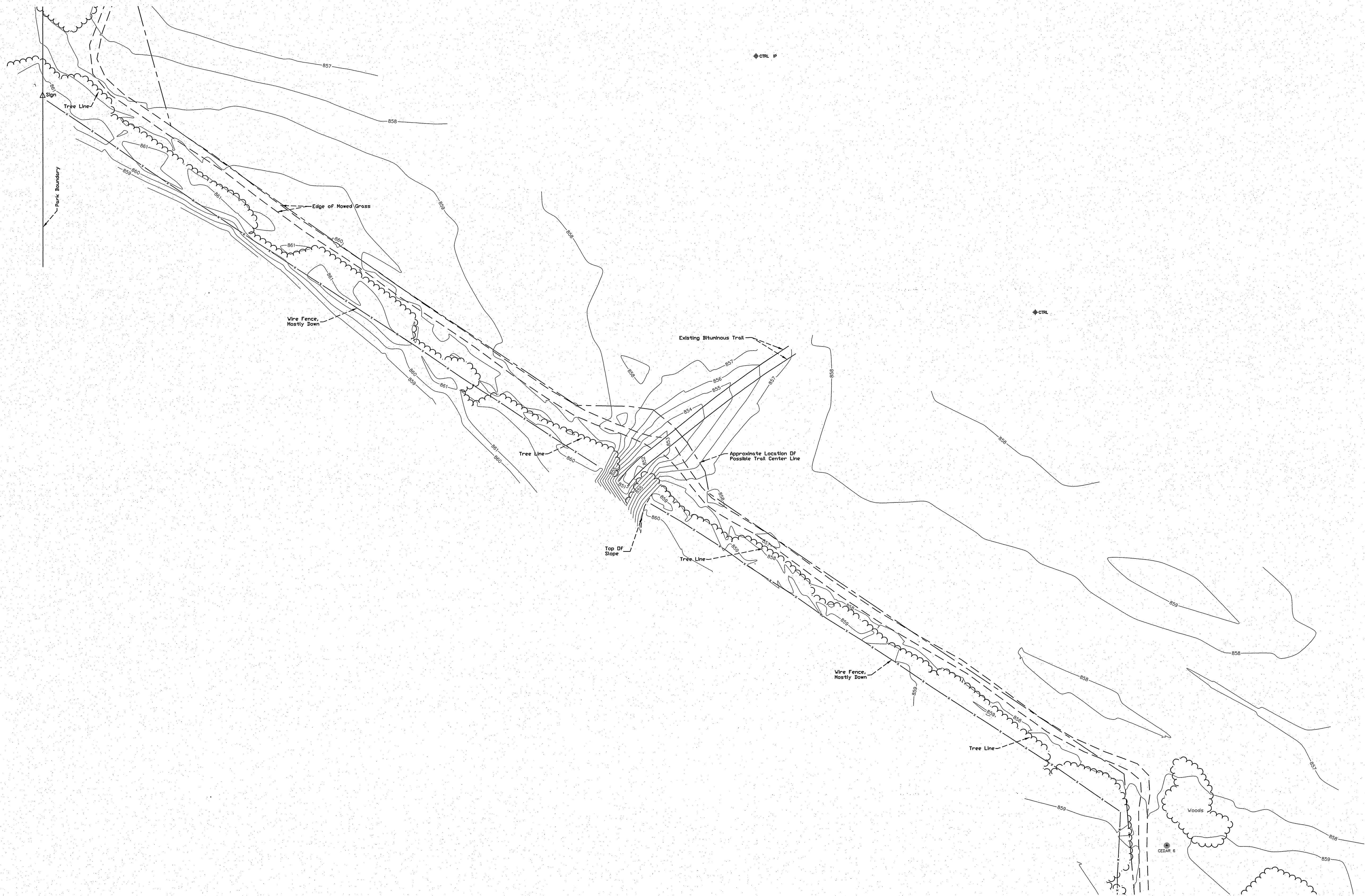
Approximate Edge Of Ice As Located On December 22, 2015



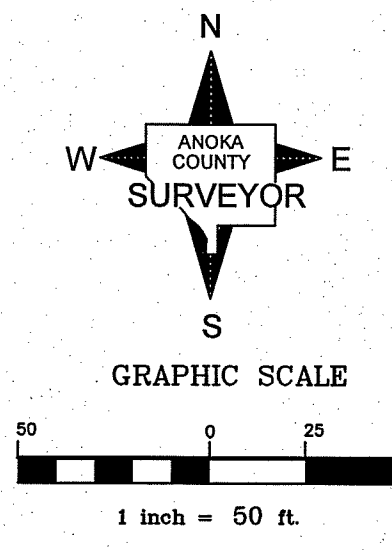
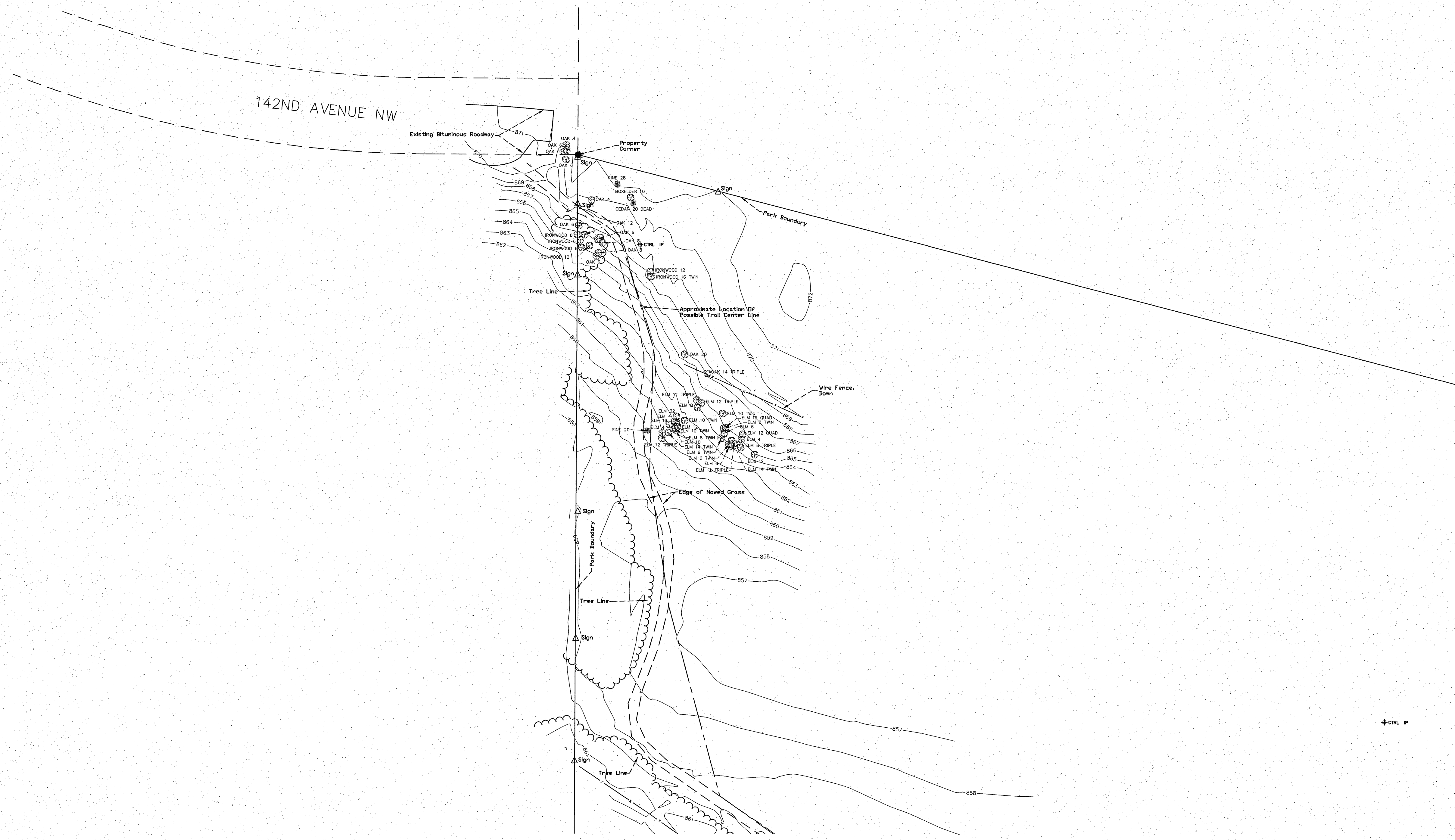
ANOKA COUNTY SURVEYOR'S OFFICE
2100 3RD AVENUE NORTH, ROOM 224
ANOKA, MN. 55303 763-823-5511

TOPOGRAPHY SURVEY
for
ANOKA COUNTY PARKS DEPARTMENT

DATE: JANUARY 29, 2016 SHEET 5 OF 7 SHEETS



ANOKA COUNTY SURVEYOR'S OFFICE 2100 3RD AVENUE NORTH, ROOM 224 ANOKA, MN. 55303 763-323-5511	
TOPOGRAPHY SURVEY for ANOKA COUNTY PARKS DEPARTMENT	
DATE: JANUARY 29, 2016	SHEET 6 OF 7 SHEETS



ANOKA COUNTY SURVEYOR'S OFFICE 2100 3RD AVENUE NORTH, ROOM 224 ANOKA, MN. 55303 763-323-5511	
TOPOGRAPHY SURVEY for ANOKA COUNTY PARKS DEPARTMENT	
DATE: JANUARY 29, 2016	SHEET 7 OF 7 SHEETS