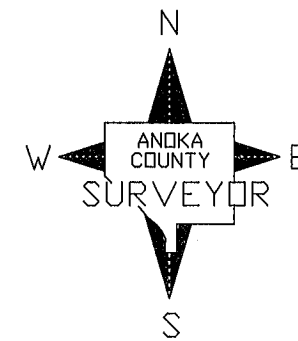
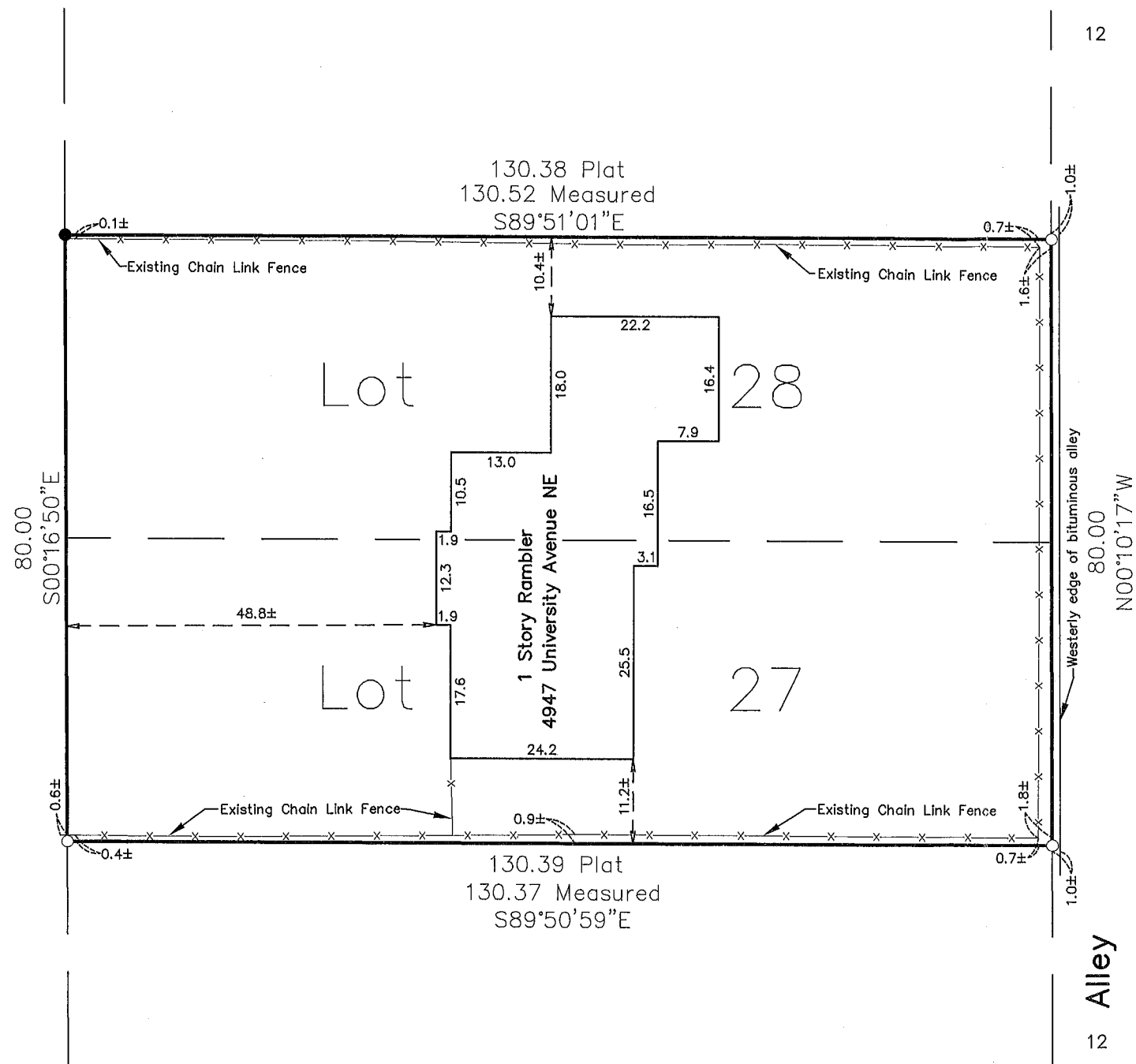


UNIVERSITY AVENUE NE  
(STATE TRUNK HIGHWAY NO. 47)



GRAPHIC SCALE



1 inch = 20 ft.

Bearing System Is Assumed.

- Denotes Found Iron Monument.
- Denotes Iron Pipe Set Marked By Anoka Co. Surv.

I hereby certify that this survey, plan or report was prepared by me or under my direct supervision and that I am a duly Licensed Land Surveyor under the laws of the State of Minnesota.

*Larry D. Houm*  
LARRY D. HOUM

Date AUGUST 6, 2009 License No. 18165

Lots 27 and 28, Block 13, ROSLYN PARK, Anoka County, Minnesota.  
P.I.N. 26-30-24-24-0116

<b>ANOKA COUNTY SURVEYOR'S OFFICE</b>	
2100 3RD AVENUE NORTH, ROOM 224 ANOKA, MN. 55303 763-323-5511	
<b>BOUNDARY SURVEY</b> for ANOKA COUNTY <b>COMMUNITY DEVELOPMENT</b>	
DATE : AUGUST 6, 2009	SHEET 1 OF 1 SHEET

Original