

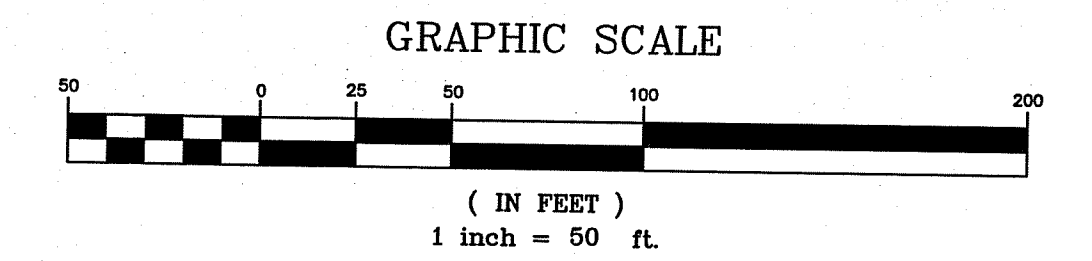
MISSISSIPPI

WEST



Water Elevation on
Oct. 25 - Nov. 1, 2010
= 834.9a to 837.8z

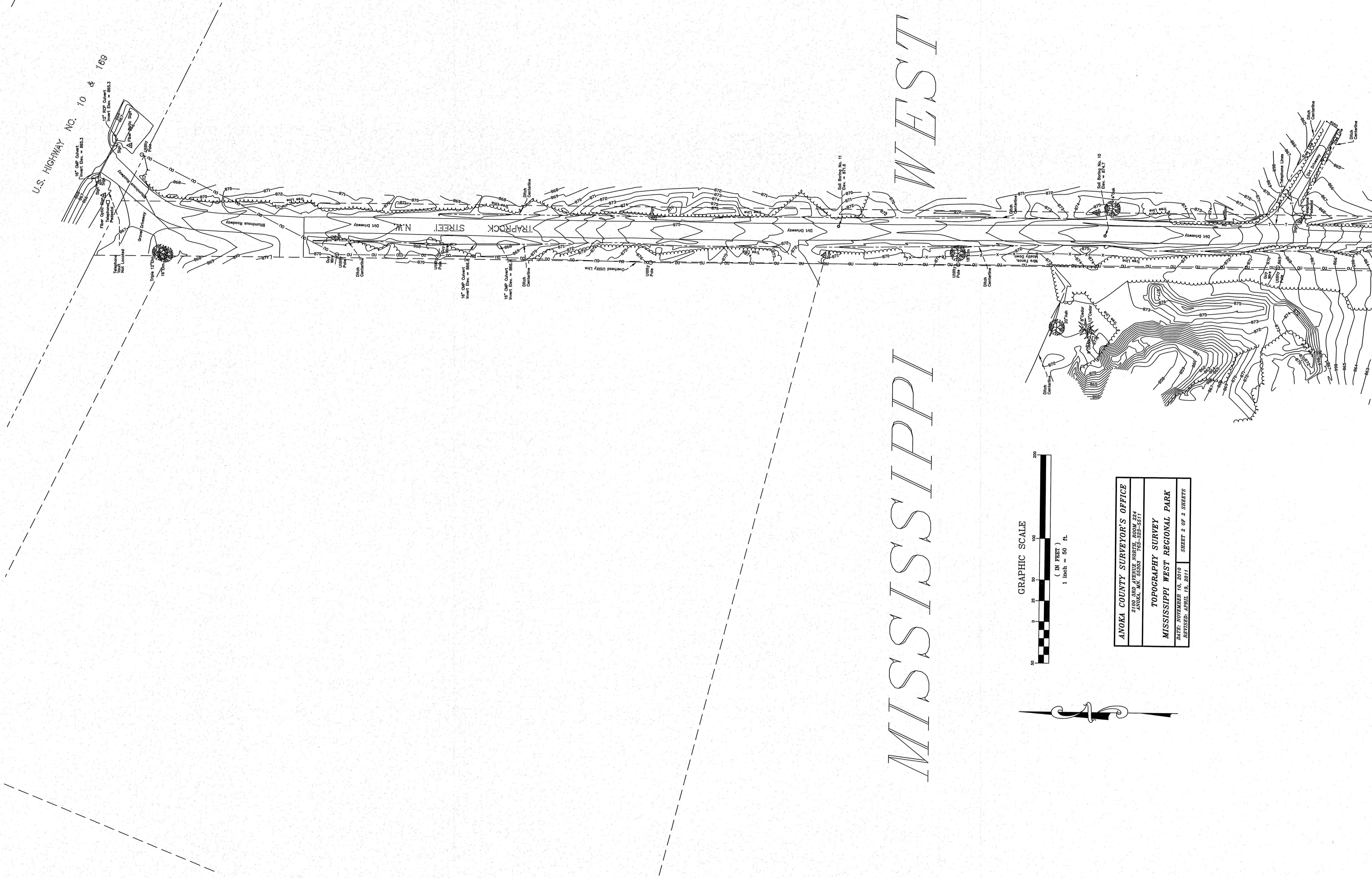
MISSISSIPPI RIVER



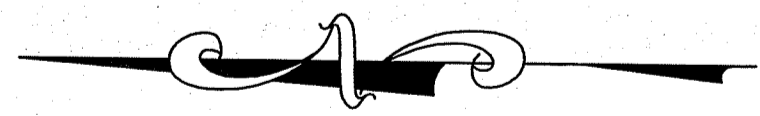
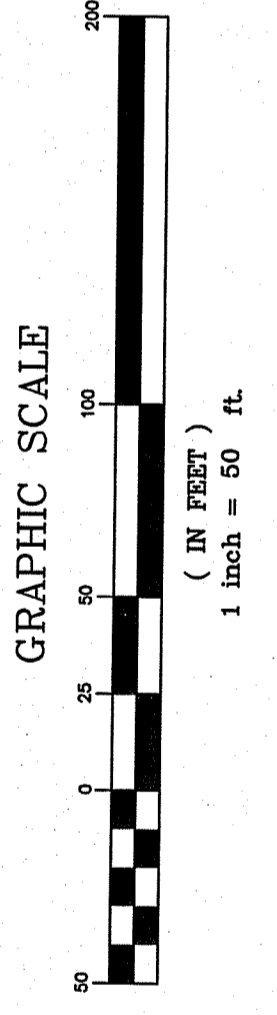
ANOKA COUNTY SURVEYOR'S OFFICE	
2100 3RD AVENUE NORTH, ROOM 224 ANOKA, MN. 55303 763-323-5511	
TOPOGRAPHY SURVEY	
MISSISSIPPI WEST REGIONAL PARK	
DATE: NOVEMBER 10, 2010	SHEET 1 OF 2 SHEETS
REVISED: APRIL 19, 2011	

I hereby certify that this survey, plan or report was prepared by me or under my direct supervision and that I am a duly Licensed Land Surveyor under the laws of the State of Minnesota.

Larry D. Holum
LARRY D. HOLUM
Date 4/19/11 License No. 18165

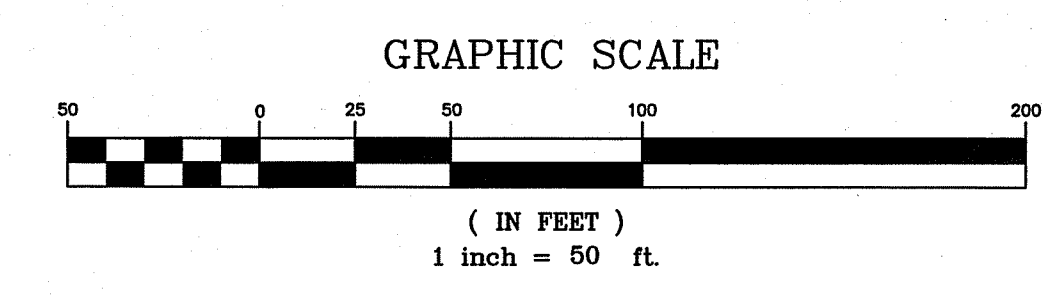


MISSISSIPPI WEST



ANOKA COUNTY SURVEYOR'S OFFICE	
2400 3RD AVENUE NORTH, ROOM 204 ANOKA, MN 55303 763-323-6511	
TOPOGRAPHY SURVEY	
MISSISSIPPI WEST REGIONAL PARK	
DATE: NOVEMBER 10, 2010	SHEET 2 OF 2 SHEETS
REVISED: APRIL 19, 2011	

MISSISSIPPI WEST



ANOKA COUNTY SURVEYOR'S OFFICE
 2100 3RD AVENUE NORTH, ROOM 224
 ANOKA, MN. 55303 763-323-5511

TOPOGRAPHY SURVEY
MISSISSIPPI WEST REGIONAL PARK

DATE : NOVEMBER 10, 2010 SHEET 1 OF 2 SHEETS

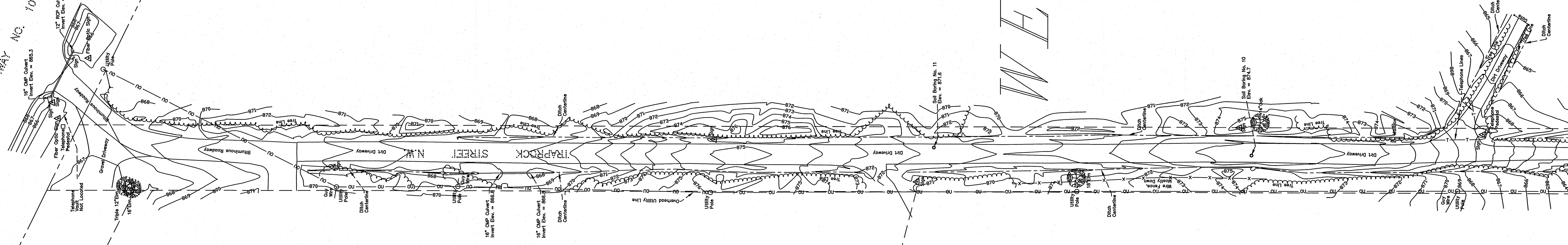
Water Elevation on
 Oct. 25 - Nov. 1, 2010
 = 834.92 to 837.82

MISSISSIPPI RIVER

I hereby certify that this survey, plan or report was prepared by me or under my direct supervision and that I am a duly Licensed Land Surveyor under the laws of the State of Minnesota.

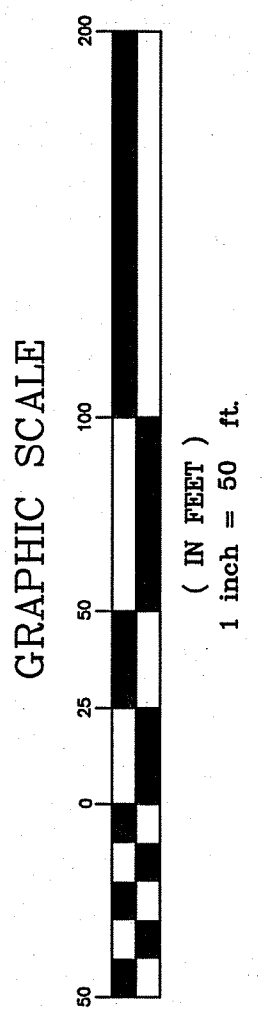
Larry D. Holum
 LARRY D. HOLUM
 Date 11/10/10 License No. 18165

U.S. Highway No. 10 & 168



WEST

MISSISSIPPI



ANOKA COUNTY SURVEYOR'S OFFICE 2100 3RD AVENUE NORTH, ROOM 224 ANOKA, MN. 55303 763-323-5511
TOPOGRAPHY SURVEY MISSISSIPPI WEST REGIONAL PARK
DATE : NOVEMBER 10, 2010 SHEET 2 OF 2 SHEETS