

# MISSISSIPPI WEST REGIONAL PARK

Sheet 7

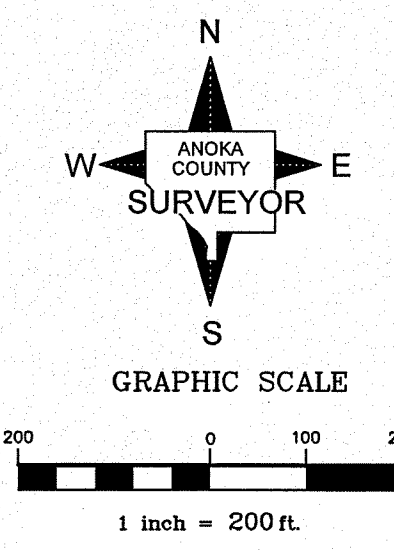
Sheet 6

Sheet 5

Sheet 4

Sheet 3

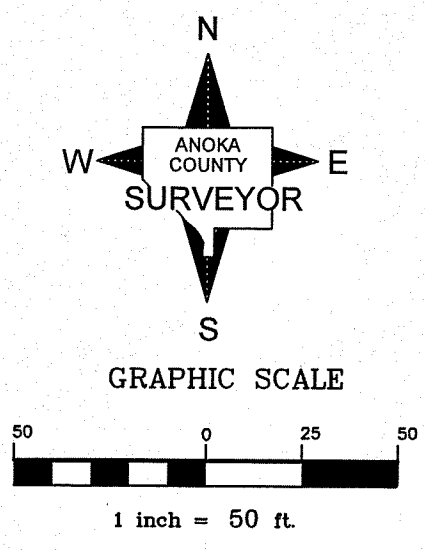
Sheet 2



I hereby certify that this survey, plan or report was prepared by me or under my direct supervision and that I am a duly Licensed Land Surveyor under the laws of the State of Minnesota.

*Larry D. Houm*  
LARRY D. HOUM  
Date APRIL 14, 2016 License No. 18165

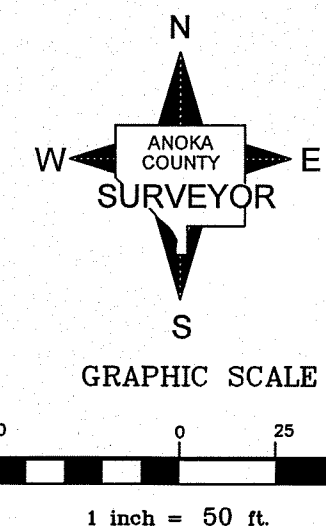
ANOKA COUNTY SURVEYOR'S OFFICE	
2100 3RD AVENUE NORTH, ROOM 224 ANOKA, MN. 55303 763-323-5511	
TOPOGRAPHY SURVEY for ANOKA COUNTY PARKS DEPARTMENT	
DATE: JANUARY 29, 2016 REVISED: APRIL 13, 2016	SHEET 1 OF 7 SHEETS



**ANOKA COUNTY SURVEYOR'S OFFICE**  
 2100 3RD AVENUE NORTH, ROOM 224  
 ANOKA, MN. 55303 763-323-5511  
**TOPOGRAPHY SURVEY**  
 for  
**ANOKA COUNTY PARKS DEPARTMENT**  
 DATE: JANUARY 29, 2016  
 REVISED: APRIL 13, 2016  
 SHEET 2 OF 7 SHEETS

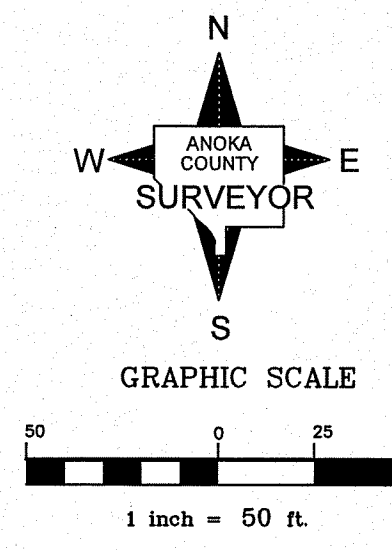
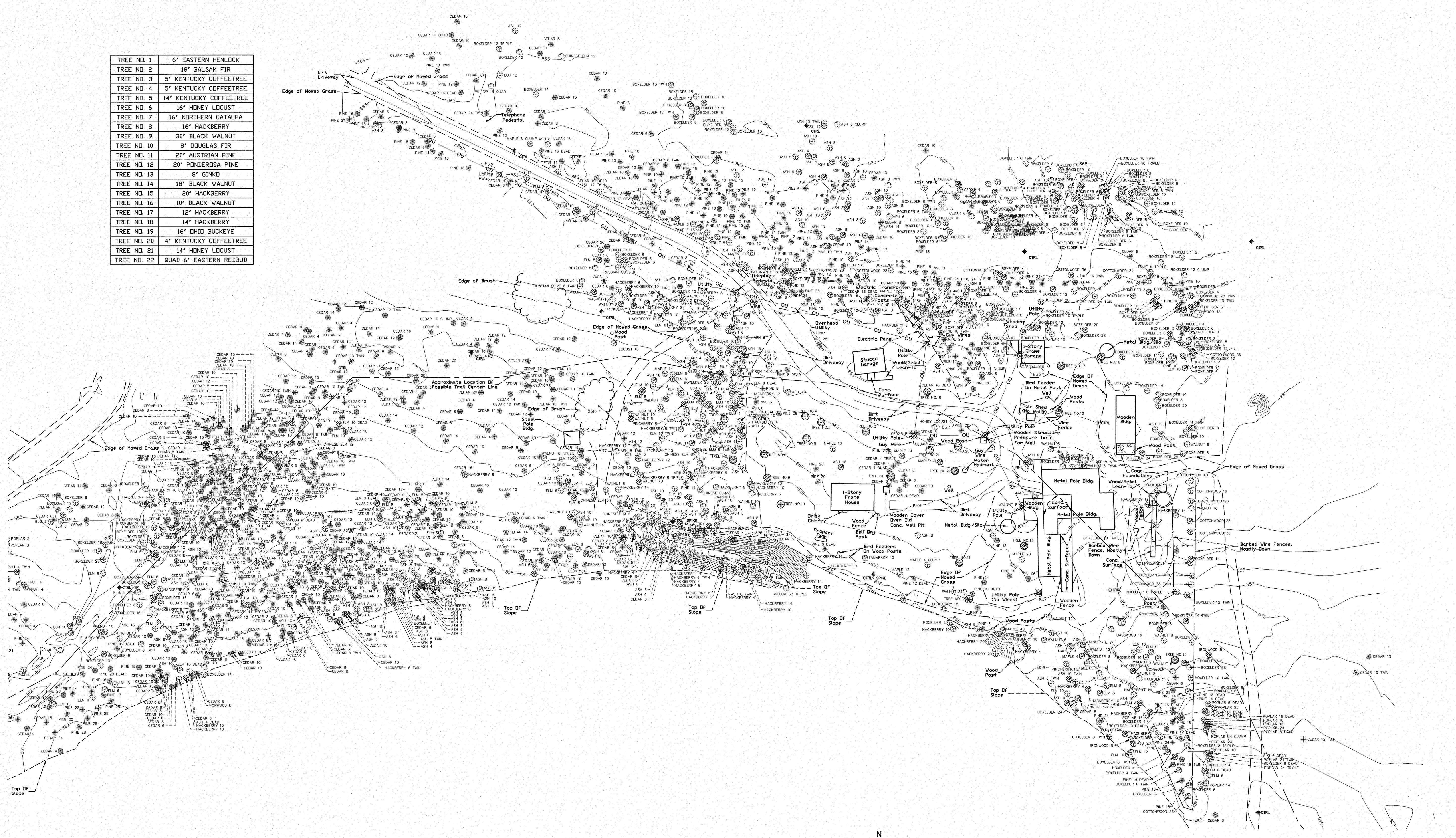


The East Line of Section 33, T.32, R.23 &  
The West Line of Section 34, T.32, R.23

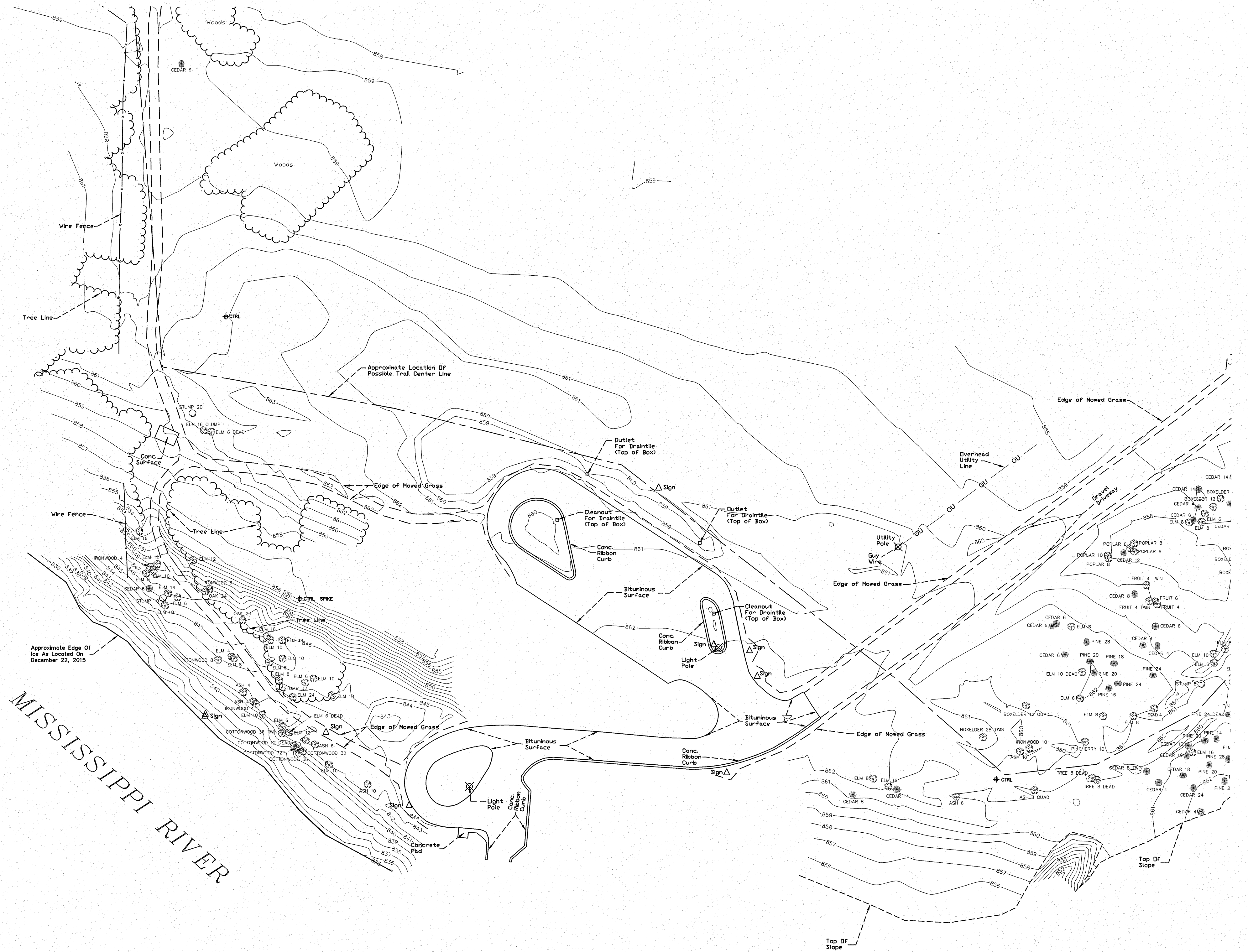


<b>ANOKA COUNTY SURVEYOR'S OFFICE</b> 2100 3RD AVENUE NORTH, ROOM 224 ANOKA, MN. 55303 763-323-5511	
<b>TOPOGRAPHY SURVEY</b> for <b>ANOKA COUNTY PARKS DEPARTMENT</b>	
DATE: JANUARY 29, 2010 REVISED: APRIL 13, 2016	SHEET 3 OF 7 SHEETS

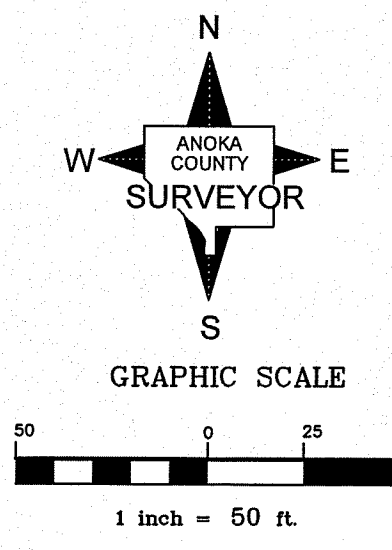
TREE NO. 1	6' EASTERN HEMLOCK
TREE NO. 2	18' BALSAM FIR
TREE NO. 3	5' KENTUCKY COFFEETREE
TREE NO. 4	5' KENTUCKY COFFEETREE
TREE NO. 5	14' KENTUCKY COFFEETREE
TREE NO. 6	16' HONEY LOCUST
TREE NO. 7	16' NORTHERN CATALPA
TREE NO. 8	16' HACKBERRY
TREE NO. 9	30' BLACK WALNUT
TREE NO. 10	8' DOUGLAS FIR
TREE NO. 11	20' AUSTRIAN PINE
TREE NO. 12	20' PONDEROSA PINE
TREE NO. 13	8' GINKO
TREE NO. 14	18' BLACK WALNUT
TREE NO. 15	20' HACKBERRY
TREE NO. 16	10' BLACK WALNUT
TREE NO. 17	12' HACKBERRY
TREE NO. 18	14' HACKBERRY
TREE NO. 19	16' OHIO BUCKEYE
TREE NO. 20	4' KENTUCKY COFFEETREE
TREE NO. 21	14' HONEY LOCUST
TREE NO. 22	QUAD 6' EASTERN REDBUD



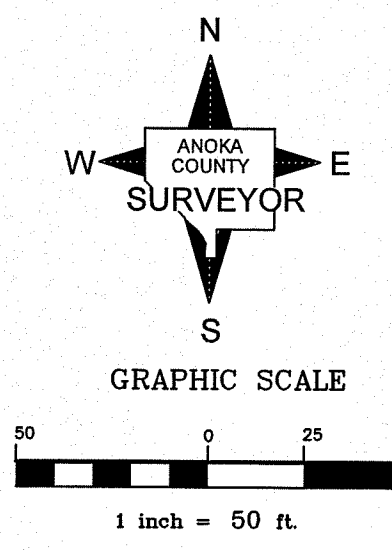
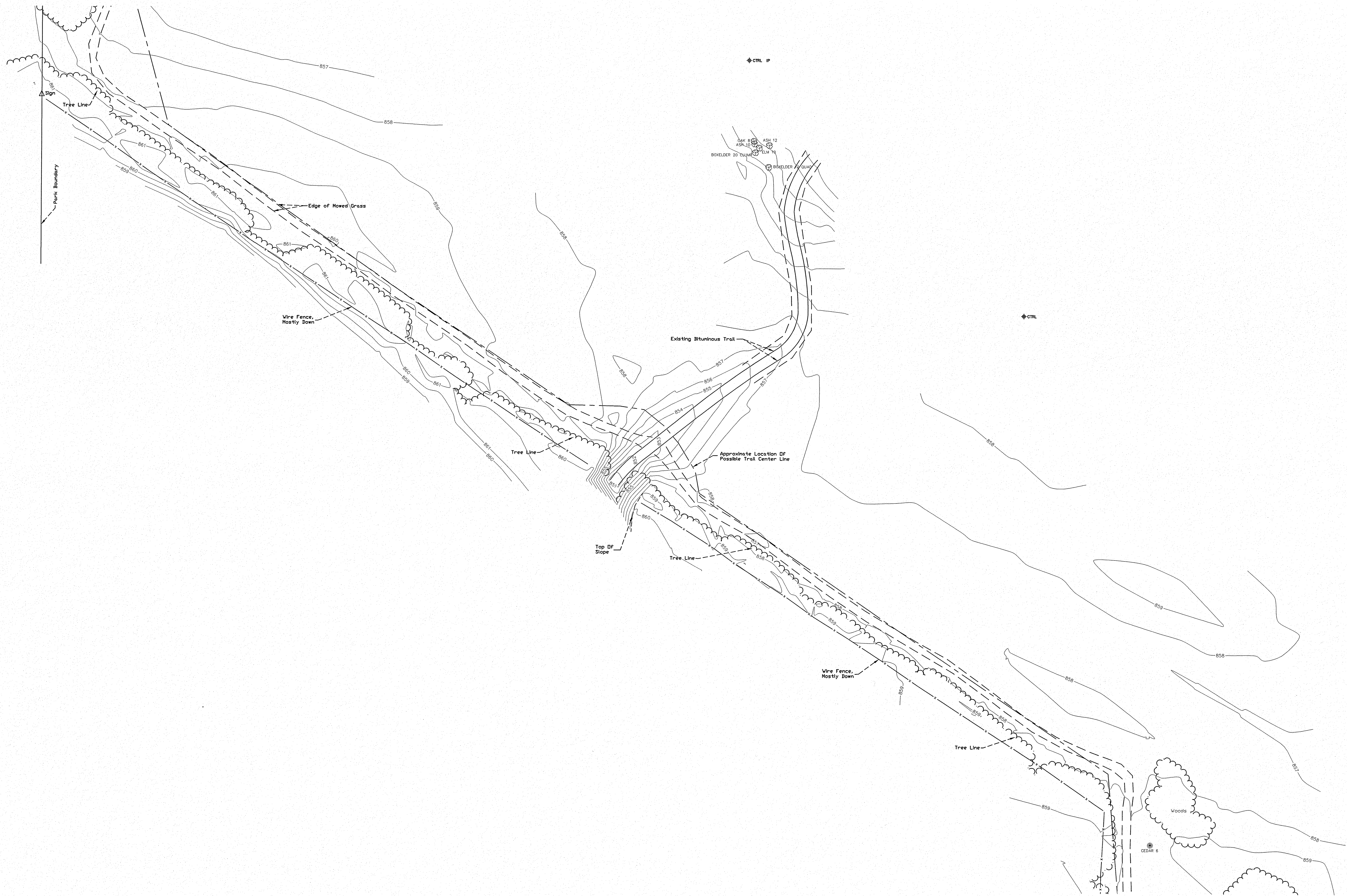
**ANOKA COUNTY SURVEYOR'S OFFICE**  
 2100 3RD AVENUE NORTH, ROOM 224  
 ANOKA, MN. 55303 763-323-5511  
**TOPOGRAPHY SURVEY**  
 for  
**ANOKA COUNTY PARKS DEPARTMENT**  
 DATE: JANUARY 29, 2019  
 REVISED: APRIL 13, 2016  
 SHEET 4 OF 7 SHEETS



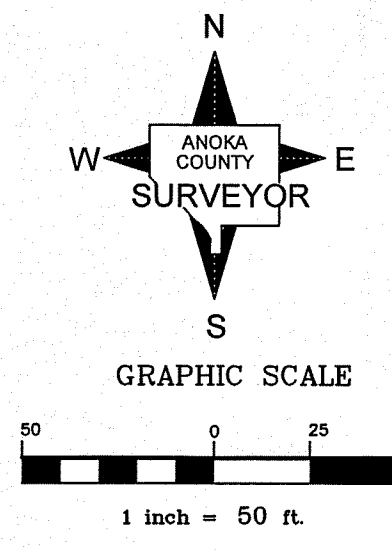
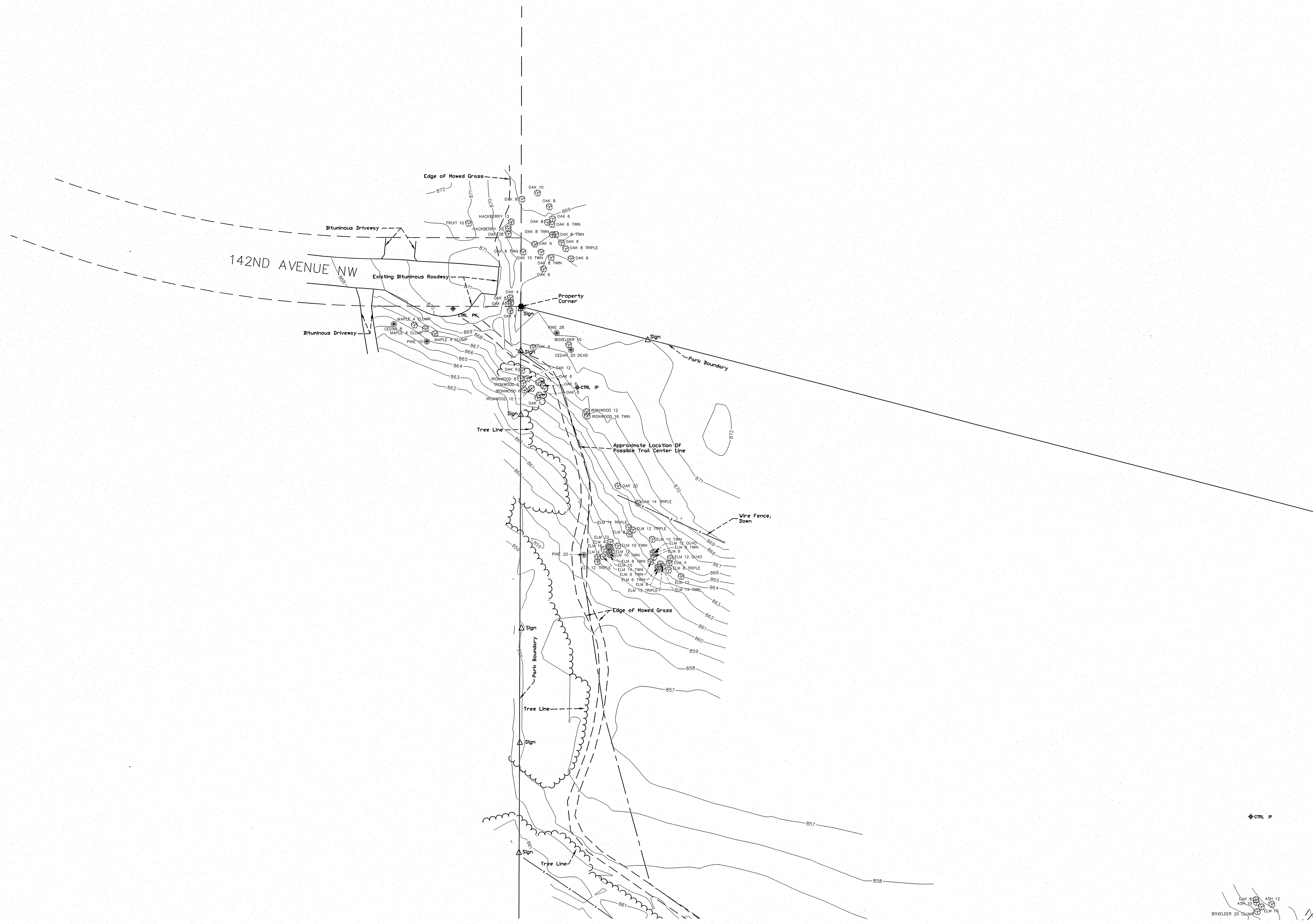
MISSISSIPPI RIVER



<b>ANOKA COUNTY SURVEYOR'S OFFICE</b> 2100 3RD AVENUE NORTH, ROOM 224 ANOKA, MN. 55303 763-323-5511	
<b>TOPOGRAPHY SURVEY</b> for <b>ANOKA COUNTY PARKS DEPARTMENT</b>	
DATE: JANUARY 29, 2016 REVISED: APRIL 13, 2016	SHEET 5 OF 7 SHEETS



<b>ANOKA COUNTY SURVEYOR'S OFFICE</b> 2100 3RD AVENUE NORTH, ROOM 224 ANOKA, MN. 55303 763-323-5511	
<b>TOPOGRAPHY SURVEY</b> for <b>ANOKA COUNTY PARKS DEPARTMENT</b>	
DATE: JANUARY 29, 2016 REVISED: APRIL 13, 2016	SHEET 6 OF 7 SHEETS



ANOKA COUNTY SURVEYOR'S OFFICE  
 2100 3RD AVENUE NORTH, ROOM 224  
 ANOKA, MN. 55303 763-323-5511

TOPOGRAPHY SURVEY  
 for  
 ANOKA COUNTY PARKS DEPARTMENT

DATE: JANUARY 29, 2016  
 REVISED: APRIL 13, 2016

SHEET 7 OF 7 SHEETS